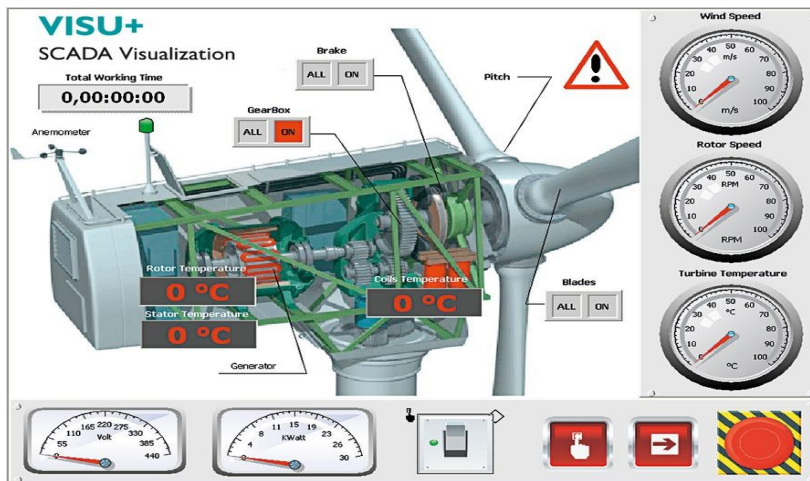


## Scada Systems & Hmi Panels

### SCADA SYSTEMS

SCADA (Supervisory control & Data Acquisition) is used for monitoring & controlling purposes usually in large scale industries. Our experienced team of engineers delivers what is planned and necessary into real time information on the SCADA.



### HMI PANEL

HMI operator's panels (MT series) are devices for the visualization of industrial processes and they are designed to work in tough industrial conditions. We offer panels with screen dimensions: 3.5", 5.7", 8.0" and 10.4". Ca 200 communication drivers enable the communication with almost everything available on the automation market, PLC controllers, frequency converters and temperature controllers (among others, MODBUS protocol). Servicing

The HMI Panel is delivered with Master tool software which allows configuration including such elements as: synoptic screens – presenting the automated process. The user has at his disposal a rich library of graphic elements (several thousands of graphics).

